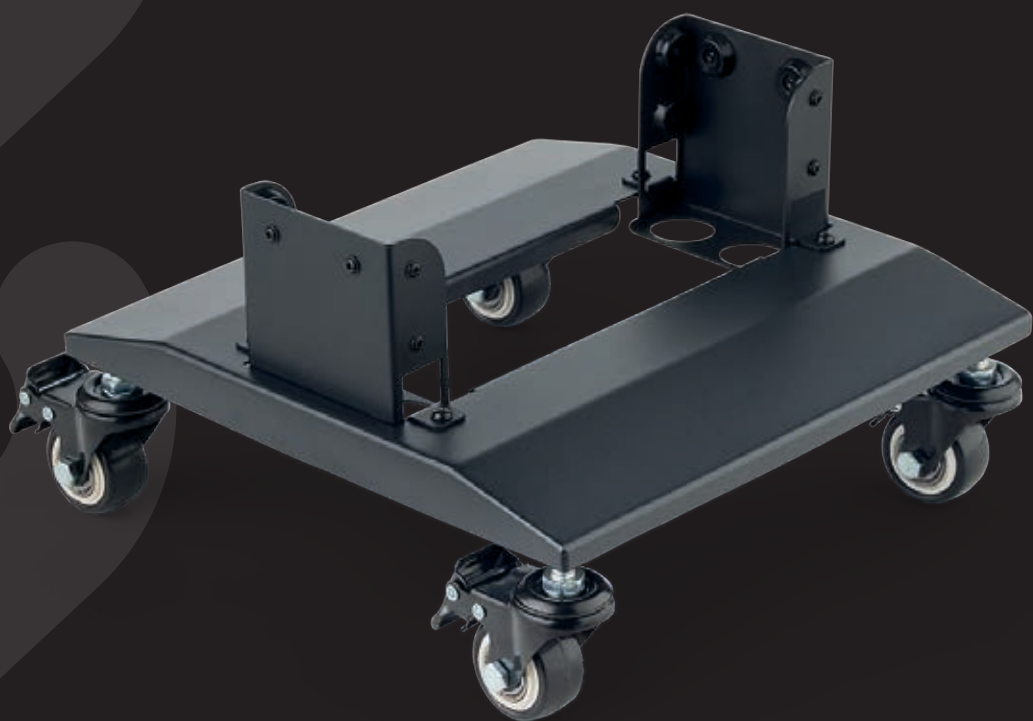




BON CHARGE



WHEELIE BASE STAND

USER GUIDE

1. COMPATIBILITY

This stand is compatible with Max Red Light Therapy Device and Super Max Red Light Therapy Device.

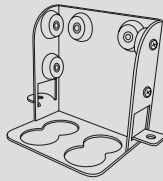
2. ASSEMBLY INSTRUCTIONS

Items included:

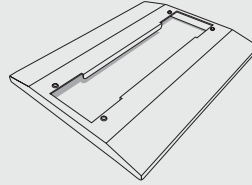
X4 WHEELS



X2 BRACKETS

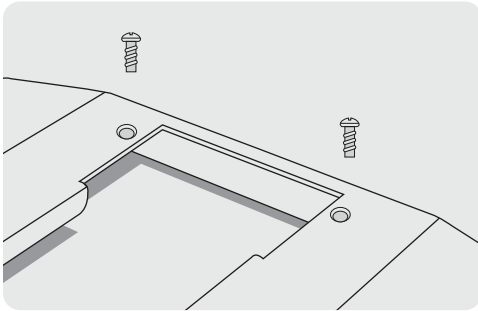


X1 BASE



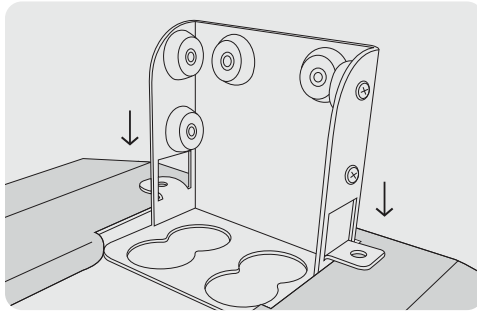
Step 1:

Unscrew the 4x bolts on the surface of the base stand.



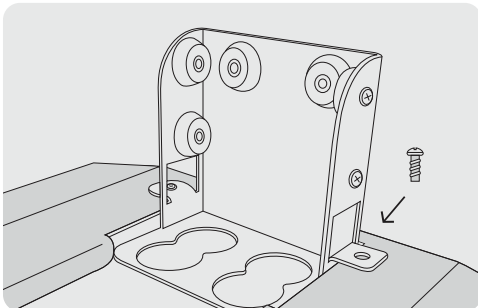
Step 2:

Place the brackets on the top of the screw holes.



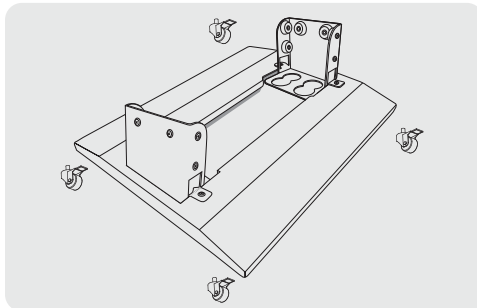
Step 3:

Screw the bolts back in place, repeat other side.



Step 2:

Screw in all 4 wheels. Lid down to lock, lid up to move.



Step 5:
Completed look.



Step 6:
Place your Max or Super Max Red Light Therapy Device into the stand until it's firmly in place.





BON CHARGE



@boncharge



@boncharge_



boncharge.com